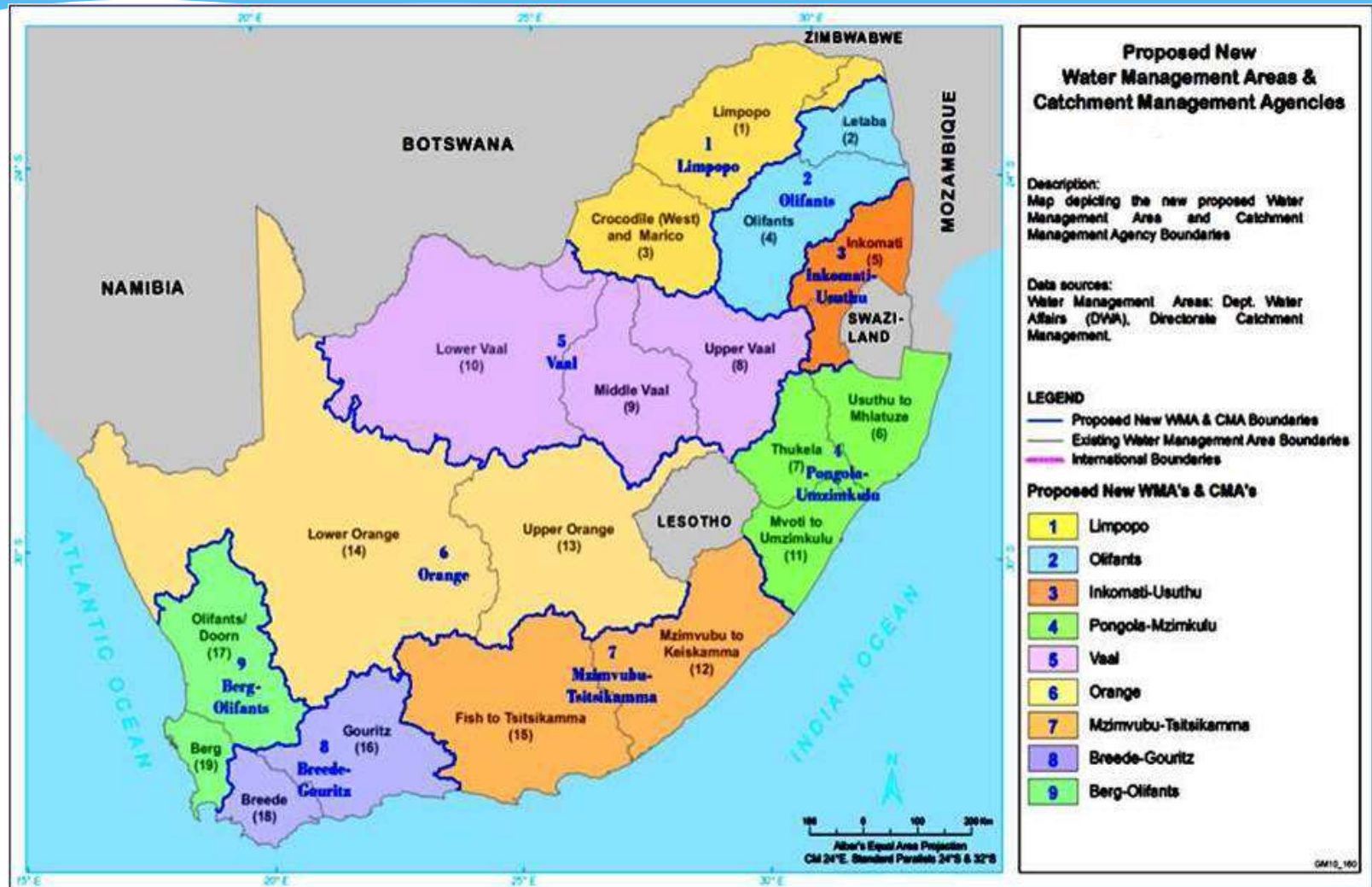


# BREDE-GOURITZ

Catchment Management Agency  
Opvanggebied Bestuursagentskap  
I-Arhente yoLawulo lomMandla nokungqongileyo

Link between the study and the Catchment Management Strategy.

# Water Management Areas



# Integrated Water Resource Management

- Integrated water resource management (IWRM) may be defined simultaneously:
  - as a philosophy, a process and strategy
  - promotes at a local catchment, regional, national and international level the co-ordinated development and management of water resources
  - in order to ensure optimum economic and social benefits in an equitable manner without compromising the sustainability of aquatic ecosystems



# Fundamental Principles of Integrated Water Resources Management

## \* Sustainability and Equity

Protection

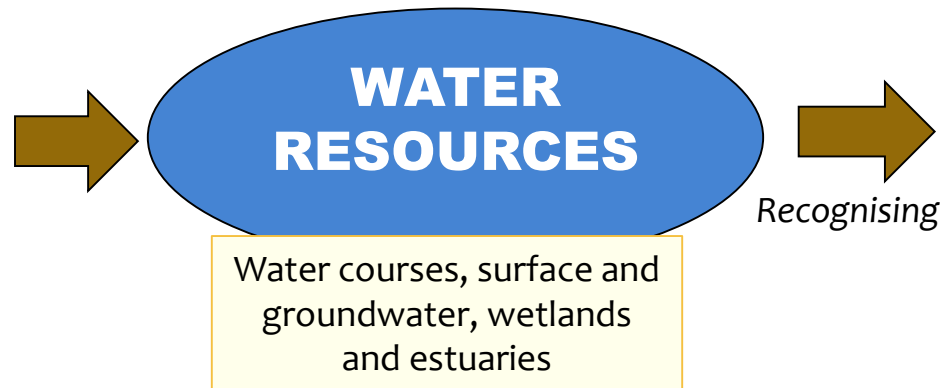
Use

Development

Management

Conservation

Control



Basic human needs of present and future generations

Need to protect water resources

Need to share water resources with other countries

Need to promote socio-economic development through use of water

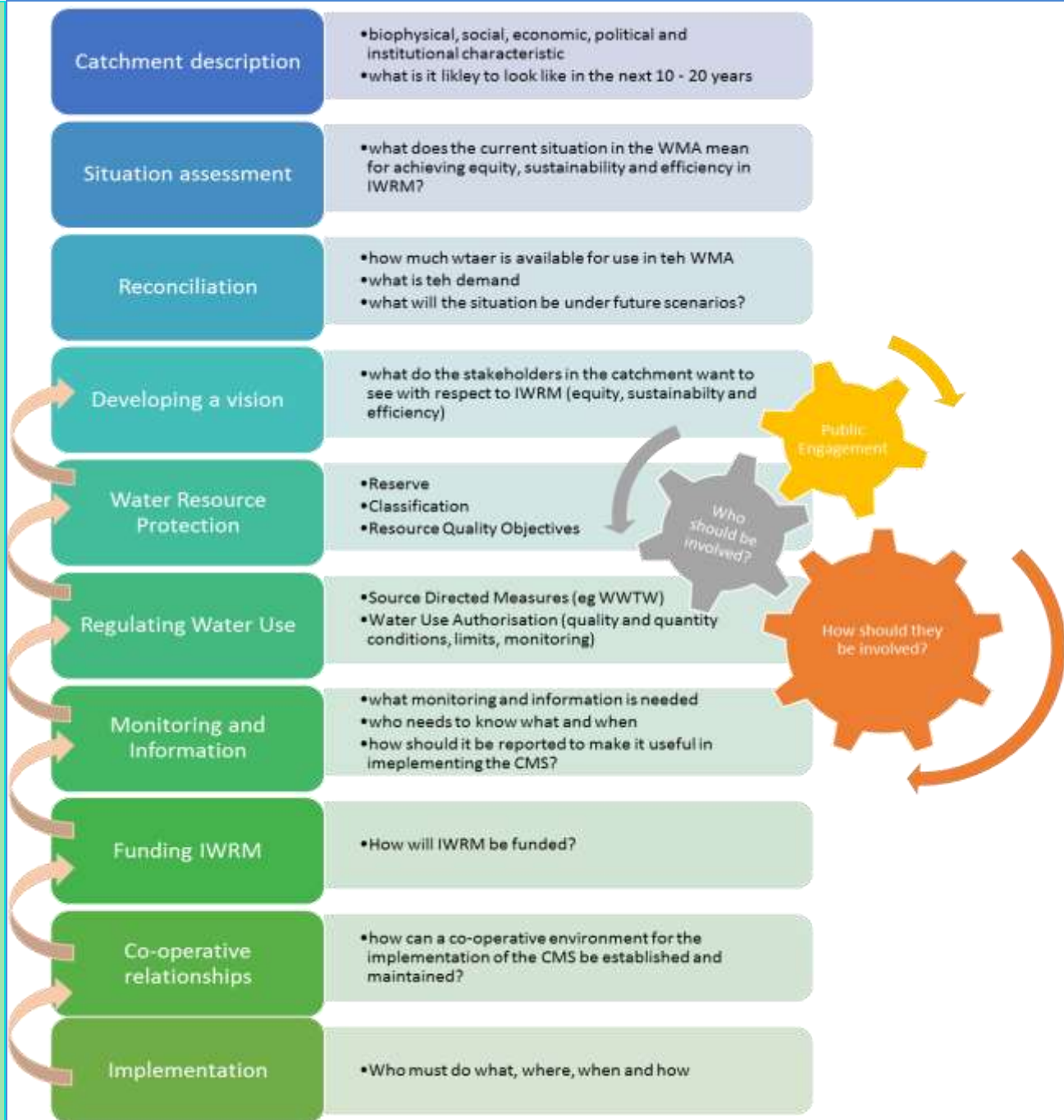
Establishment of suitable institutions

**BREEDE-GOURITZ**

Catchment Management Agency  
Opvoorgelêde Bestuursagentskap  
Isixhente yoliwende Isixhanda Isixhanda Isixhanda Isixhanda

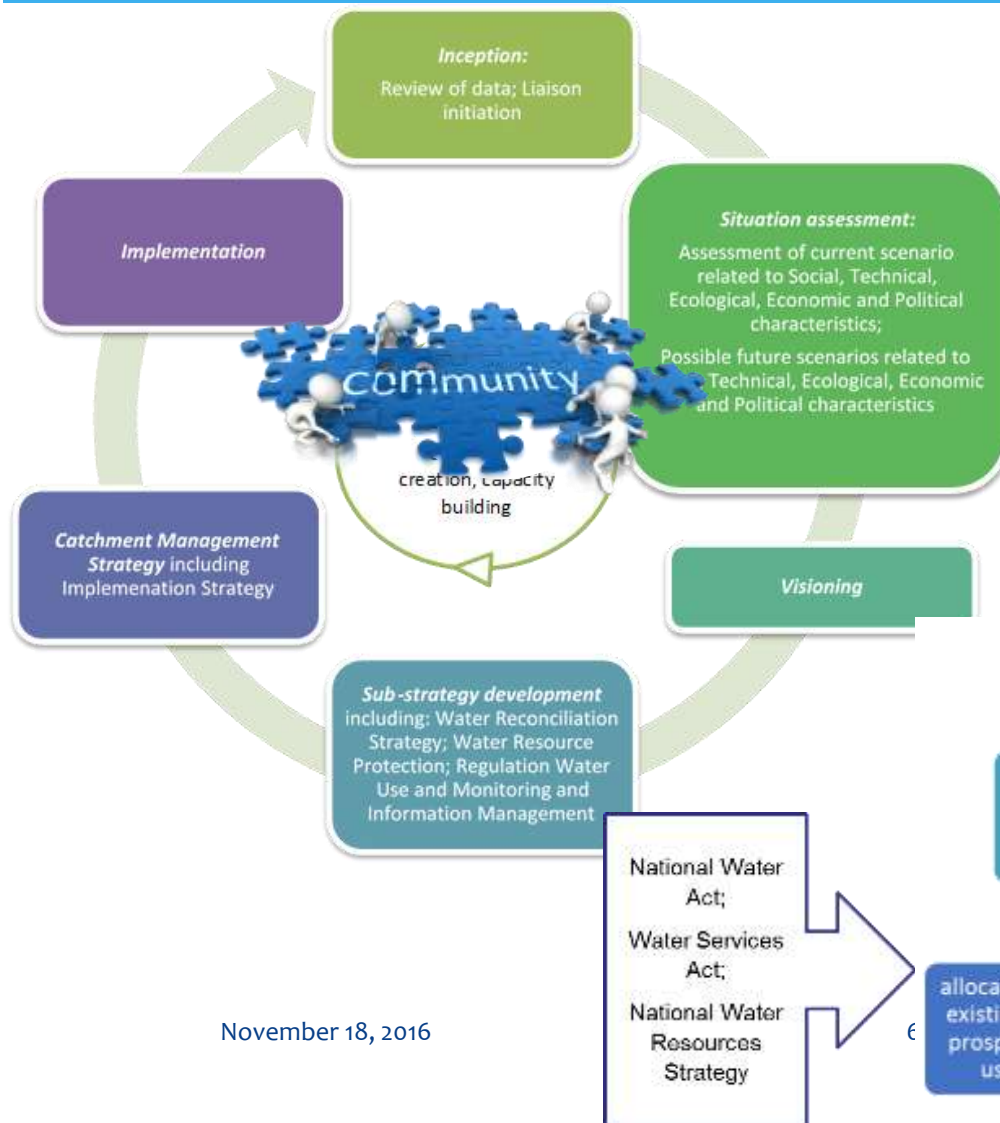
## Principles guiding CMS development

- Recognising the difference between catchments
- Institutional legitimacy and collaboration with key institutions
- Process management and stakeholder participation/awareness creation
- Transparency
- A focus on the poor and vulnerable
- A focus on efficiency
- The CMS as a living process





# CATCHMENT MANAGEMENT STRATEGIES



A high-order plan that will set strategic actions to be followed to achieve medium-to-long-term goals taking into consideration the existing policies and plans. The end product should be an interface between policies and projects taking into consideration those developed at a provincial and national level.



November 18, 2016

# Closing remarks.

The two projects are supporting each other and where feasible resources are shared.

The CMS will be completed before this project.

This first order CMS for the Breede-Gourits will include objectives to be achieved that are linked to the RC and RQOs.

RC and RQOs are the basis/foundation of IWRM. Meaning that it will impact/influence all actions with regards to IWRM.

For the basis to be strong the involvement of stakeholders are important.

THE END.